



EWELL PARISH NEWS



The monthly newspaper of St Mary the Virgin

No.431

December 2008

60p

Sharing the Love of Christ, the Light of the World, with the people of Ewell

CHRISTMAS LASTS FOR EVER

It is a thing most wonderful,
Almost too wonderful to be -
That God's own Son should come
from Heaven
And die to save a child like me.

Not in entire forgetfulness,
And not in utter nakedness,
But trailing clouds of glory do we
come
From God who is our home.

Christmas has come round again. Hearts are full. The helplessness of the Child in the Manger reassures each of us in our helplessness here in the world. We know that the end He came to lifts us up and out of any end we may come to.

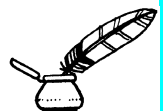
So our eternity seems renewed every Christmas.

was the poet's attempt to convey what prose never can - that oneness with God and our fellows which renders our lives eternally important to God and others.

It is with the simplicity of this Child that St. Mary's hopes everyone will have



A VERY HAPPY CHRISTMAS



THE VICAR writes

YULE AT EWELL OR CHRISTMAS AT ST MARY'S

Awful pun, but at least the explanation says what these paragraphs are about this time. Over the years Christmas has been an evolving festival at St Mary's. We have done all sorts of different things, and regularly tweaked the mixture from time to time. It is strange to recall now that for many years there was no form of Sung Eucharist on Christmas morning. That particular service, in its distinctive form of 'Mass at the Crib', seems to have become the 'parish' service for Christmas, in the sense that it is the service at which we expect to see the regular Sunday morning congregation as forming the majority of that particular congregation. The Midnight Mass always has a wonderful atmosphere of Christian confidence and exuberance, as we celebrate the birth of Christ with Word and Sacrament, with light and colour, and with music and incense. This tends to be the service at which we welcome many visitors, and also those who return to St Mary's for old times' sake, after having moved away from the area, but having found the pull of St Mary's at Christmas something too great to resist. The success story in recent years has probably been 'The Arrival at Bethlehem Service' at tea-time on Christmas Eve, and this is the occasion when young families in particular find a service which meets their needs, for it is much less formal than the other Christmas services, even though it ends with the formal Blessing of the Christmas Crib.

This year we are having an addition to our usual pattern, and this will be **A Festival of Nine Lessons and Carols**, and this will take place on the evening of Sunday, 21 December at 1700. This has not really been a possibility in recent years, not least because of the additional workload it brings to the choir at what is already a busy time of year, and in any case the statutory services of the Church have to take precedence in this respect. However, the choir has so tremendously improved that a 'Nine Lessons' is a realistic option this year. Since, as a result of putting out a list, it is clear that there will be a decent congregation at the service, it seems right to proceed, and this (if successful) should be a welcome addition to our normal pattern of worship over Christmas. The service itself is a somewhat hybrid affair, because it is a development of a pre-Reformation rite in which an Office of Nine Lessons was a regular feature of certain festivals. Archbishop Benson first devised this Church of England Christmas version of the service when he was Bishop of Truro in the nineteenth century (he had to double-up as Dean in those days), for use in his new cathedral. This pattern is, of course, best known in its modern form in the particular Christmas version, which is broadcast annually from King's College, Cambridge. The service is in fact very flexible, and has been adapted in various ways. However, this year at St Mary's the well-known Cambridge pattern will be followed,

St Mary the Virgin EWELL PARISH CHURCH

020 8393 2643

Website: www.stmarysewell.com

CLERGY

Canon W R Hanford MA BD LLM Vicar of Ewell
Ewell Vicarage, Church Street, Ewell, Epsom KT17 2AQ
The Reverend Patrick Miller MA PhD (Honorary)

READERS

Mr Reginald Saunders MA MEd 020 8393 5550
Mrs Wendy Varney 020 8393 5212

CHURCHWARDENS

Mr David Crick 07850 709461
Mr Jonathan Gocher 020 8224 5942

SUNDAY AT ST MARY'S

0800 HOLY COMMUNION

0930 SUNG EUCHARIST

The Wayfarers and the Sunday School meet in conjunction with this service, and there is a Creche provided in church.

There is coffee in the church hall between the Eucharist and Mattins on Sunday mornings, and a chance for members of the congregation to meet or visitors to be welcomed to St Mary's.

1100 MATTINS

(Third Sunday in each month SUNG EUCHARIST to the Book of Common Prayer Rite)

1200 HOLY COMMUNION

(On Greater Festivals and on the last Sunday of the month except in December)

1830 EVENING WORSHIP

Either at St Mary's or at Ewell United Reformed Church. Details are on the Notice Board or on the Weekly Notes.

Occasionally there are variations from this pattern; details are given in this paper, on the Notice Board or on the Weekly Notes available on Sundays.

ON WEEKDAYS

The Eucharist is normally celebrated at present on Tuesdays at 1000, and at other times as printed on the Weekly Notes. Most of the Weekday services take place in the Parish Room (entry through the door on the Church Street side of the Church).

THE PARISH OFFICE

Administrator:

Mrs Lynne Yuille 020 8393 2643 (Office)
Office email: parishoffice@stmarysewell.com

This is in the Sacristy on the south side of the church and is open from 0930 to 1300 on Monday to Friday, (though at present it is not usually open on Thursdays). Also on Friday evening from 1830 to 2000, except in August, the office is open particularly for routine enquiries about Baptism, Banns of Marriage, Confirmation, or fixing up later appointments.

The Vicar is not usually available on Thursdays, and would be grateful not to be contacted on routine matters. Emergencies are different.

EST.1934
A.E. BOOTH & SON
REPAIRS TO
ANTIQUE &
REPRODUCTION
FURNITURE

300 Hook Road, Hook
 Chessington KT9 1NY
 020 8397 7675

P.S. GALE
DECORATORS

A high quality interior &
 exterior service by a
 qualified craftsman

020 8786 0601

YOGA,
REFLEXOLOGY
& much more

Pavana Therapies caring
 holistically about your
 overall health and lifestyle

New Hatha Yoga Classes

Tues 10-1130am/Thurs 8-9.30pm

Starts 19th August 2008
 Ewell United Reformed Church

For further details call
 020 8873 2843 / 07973 410375
 enquiries@pavanatherapies.co.uk
 www.pavanatherapies.co.uk

STOP PRESS:

St. Mary's
 GIFT DAY FOR 4
 CHARITIES

Raised over £1200

with the much-loved Bidding Prayer by Dean Eric Milner-White, and with the readings from the Authorized (King James) Version of the Bible. Some lovely music is planned for the occasion, with Christmas texts set to music by many well-known composers, interspersed with the familiar readings and congregational hymns and carols. This service should cater for those who would like to find a clearly-structured liturgical service, which is non-eucharistic, and which can be included as part of their Christmas devotional practice. It should also meet the needs of those who do not normally attend eucharistic worship, and who are looking for an 'adult' service, rather than the more informal nature of our other non-eucharistic Christmas service on the afternoon of Christmas Eve. It would be good if the news of this addition to our pattern of Christmas worship also got passed around by word of mouth as well as by our formal advertising.

I wish everyone a happy and blessed Christmas.

Your friend and Parish Priest

Richard Hanford

MAKE MERRY WITH MUSIC

FROM EWELL TO CAMBRIDGE VIA HEREFORD

Hard on the heels of the news that our **Organ Scholar, Jeremy Cole**, has been awarded the Organ Scholarship at Trinity College, Cambridge, to be taken up in 2010, we now learn that for his gap year he has been awarded the Organ Scholarship at Hereford Cathedral. This too is great news, and we offer him warmest congratulations once again.

CAROLS FOR CHASE HOSPICE CARE

A further mention of the **SURREY LIFE' Carol Service in aid of 'CHASE'**, which is being held at St Mary's on Wednesday 10 December at 1900. It is a fund-raising event, with all proceeds going to Chase Hospice Care for Children. There will be some distinguished visitors, including Max Clifford, who is one of the patrons of CHASE, and Dame Jacqueline Wilson. The Parish Choir will be in action, and there will also be a Barbershop contribution. We are expecting a full church. All ticketing will be done through *Surrey Life, and not through St Mary's*. The tickets cost £10, but there are also VIP tickets which include entry to the party afterwards at Ewell Castle School, and these are also available at £15 each. To reserve tickets and for more information please call 01903 703745.

CAROL SINGING AROUND EWELL

The Parish Choir plans to sing carols around the Village on the evening of Friday, 5 December. It would be good if there were a supporters' club that night.

THE ARRIVAL AT BETHLEHEM SERVICE

The Arrival at Bethlehem Service on Christmas Eve caters for young families, and for those who are looking for a more informal service at Christmas, just as the Festival of Nine Lessons and Carols caters for those who are looking for a more traditional approach, with good music as well as the familiar congregational carols.

WA TRUELOVE & SON LTD
 INDEPENDENT FAMILY FUNERAL DIRECTORS
 & MONUMENTAL CRAFTSMEN SINCE 1885

*Serving the local
 community*

- International repatriation
- Monumental masonry
- Horsedrawn funerals
- 24 hour call out service
- Home visits available

For further details about
*TrueLove guaranteed
 pre-arranged funerals*
 Call FREEPHONE
0800 074 3797

EPSON Tel: 01372 723337 14/18 Church Road
 Branches also in: Banstead • Caterham • Cheam
 Coulsdon • Mitcham • Morden • Sutton • Wallington
 www.wa-truelove-and-son.ltd.uk email: funerals@wa-truelove-and-son.ltd.uk

To hire the
 Church Hall
 please contact

020 8394 0453

for full details of
 cost and availability

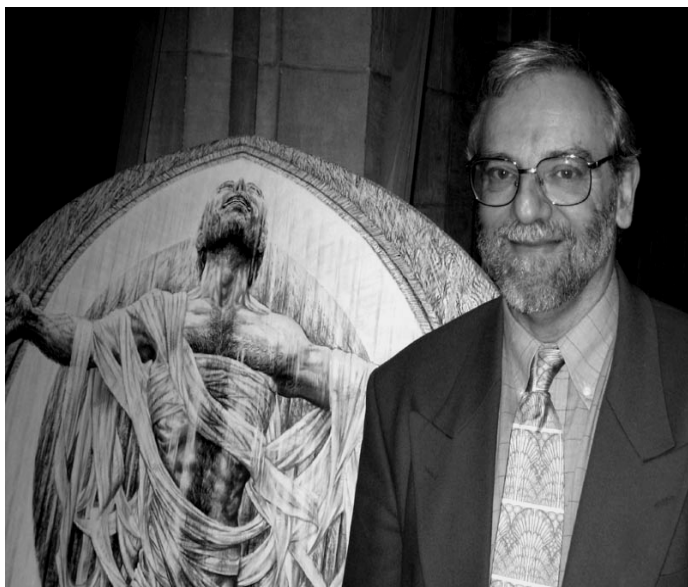
**PAINTER &
 DECORATOR**

A.L. BOVIS

Reliable friendly service
 for all exterior and interior
 household maintenance
 and improvements
 Free estimates given

01737 359581

UPDATE FROM IAIN ON HIS TRAINING



It's been really good to be able to share news when I've seen people on my preaching visits to Ewell, but I thought that you might like an update on the studies.

This has been a really busy year, and is likely to continue in the same way. The people of St. John's, West Byfleet have continued to encourage me, and I have a great team to assess my sermons and activities there. They're very honest but also really supportive! I've found particularly meaningful the times when I've taken the first half of the Eucharist service (up to the Eucharistic Prayer). Liturgy is so rich in meaning when you're in the congregation, isn't it? But, believe me, it feels ten times as significant when you are speaking it TO the congregation. There is a wonderful assurance that God's grace is at work and being announced to those he loves.

The biggest moment of fear was singing and leading my first Sung Evensong to a full church. Both vicars were away on holiday and we had a superb visiting French choir, who had performed a concert the previous evening, and were joining our choir for anthems through. As many of them were young, I thought that it would be more inclusive to do much of the service bi-lingually. My own French is of the rusty-O-level variety, but thankfully we have a very gentle French lady at St. John's who coached me, and created translations that were beautifully poetic to read and sing. Whether the choir understood my fumbblings, I can't say, but it was a wonderful, elevating experience, despite being 'thrown-in-at-the-deep-end'.

Last term our studies concentrated on the theology of St. Paul, which was revelatory. I'd often found him quite cold, but studying his writing in context, with an overview of his background as a Pharisee and the cultural issues of his time, has given me a new view on the more difficult and uncomfortable aspects of some of his letters. I've really warmed to him and am beginning to understand how to interpret his theology in the light of contemporary understanding. He is SO significant as a rigorous thinker who explored what he had received of Jesus' life and teaching in the light of his understanding of Jewish theology. When

you see how he formed Christianity into a workable and liveable theology, you begin to forgive some of his apparent prejudices (in modern eyes). And when you realise that some of the more uncomfortable passages, particularly in the Pastoral Epistles are speaking into situations that were later than Paul's time, so weren't written by Paul, he becomes a more loveable saint. I don't think that he'd have been easy to live or work with, however!

This coming term I'll be doing more preaching practice and mostly studying the Old Testament. Students from the past say they really loved this module of the course. I'm really looking forward to it.

I've two extra placements this year, one at The Church of the Good Shepherd, Pyrford, which is very different from ours, but I know a few friends there, with whom I'm training. The other is at St. Columba's House. This should give me valuable experience of different ways to approach and run retreats and day-courses. It is felt that this will be some aspect of my future ministry, as I've already led several round the country. I'm thirsty for new ideas and insights.

My painting continues, but inevitably at a slower pace than over the last few years. The Bury St. Edmunds commission seems to continue to be well received and I've just had an exciting exhibition near Devizes. I've another commission for a Cathedral altarpiece in preparation, on the theme of the Incarnation. It is for a Musicians' Chapel, commemorating the life of a distinguished musician, so it will be full of musical references. My biggest project, for Lent 2010, which you'll be able to see in Guildford Cathedral before it tours, keeps being delayed by written assignments! It consists of 14 big paintings - *Seven Last Words from the Cross* and *Seven Resurrection Appearances of Christ*. I'm sure I'll complete it on time, but it is always worrying when I can't get something right! I've a new website address for those who like to keep an eye on my paintings: mckillop.weebly.com

I look forward to seeing you all on my visits to Ewell this year, and will pass on extra news as it emerges. Thank you so much for all your prayers and your support.

Iain

EPN in 2009

We hope you have enjoyed reading your parish magazine this year and are intending to subscribe again in 2009. As you know the Vicar will be leaving us in January. You will be able to keep up-to-date via the EPN which will be issuing monthly updates on what is going on in the parish and also keeping you abreast of the new appointment in due course. The cost remains at 60p per copy or £6 if you pay in advance.

Your distributor will be knocking on your door shortly. We hope you will continue to subscribe.

Best wishes for Christmas and the New Year from your Editorial Team.

Greenfield and Company

Surveyors and Estate Agents

Property Lettings and Management

Ewell Village Branch (Est. 1923)

55 HIGH STREET, EWELL
020 8393 0077

Also at Tolworth,
Surbiton & Chessington



Specialising in this area for over 70 years
PROFESSIONAL AND PERSONAL SERVICE

*Visit the Surgery or ask for our
Domicilliary Service provided for the Elderly at Home*

Chiropody Service

The Longmead Centre
Sefton Road, Epsom KT19 9HG
Tel: (01372) 745150 (Surgery)
020 8393 1245 (Alternate Call)

Your Feet will Thank You



The National Pet Care Company

**Takes care of your pet's needs
When you are not there.**

**From Dog Walking
Dog holidays with Host families
Cat Care**

**PET TRANSPORT
Pet Taxi/Ambulance**

A service recommended by local vets

07862 706571

www.sutton.animalsathome.co.uk

SUGGESTED PRAYERS

Though Christ a thousand times
in Bethlehem be born,
If he's not born in thee
Thy soul is still forlorn.
The Cross on Calvary's hill
Will never save thy soul.
The Cross in thine own heart
alone can make thee whole

*Angelus Silesius, a mystic poet of the
seventeenth century*

In times of doubts and questionings, when our belief is perplexed by new learning, new teaching, new thought, when our faith is strained by Creeds, by doctrines, by mysteries beyond our understanding, give us the faithfulness of learners and the courage of believers in Thee; give us boldness to examine and faith to trust all truth; patience and insight to master difficulties; stability to hold fast our tradition with enlightened interpretation to admit all fresh truth made known to us, and in times of trouble, to grasp new knowledge really and to combine it loyally and honestly with the old; alike from stubborn rejection of new revelations, and from hasty assurance that we are wiser than our fathers,

Save us and help us, we humbly beseech Thee, O Lord.

Bishop Ridding's Litany, published privately

O God, by whom the meek are guided in judgement, and light riseth up in the darkness for the godly; grant us in all our doubts and uncertainties, the grace to ask what Thou wouldst have us do; that the Spirit of Wisdom may save us from all false choices, and that in thy light we may see light, and in thy straight path may not stumble, through Jesus Christ our Lord. Amen.

Ancient Collects 1861 (William Bright)

COFFEE MORNINGS

**WE MEET EVERY WEDNESDAY
FROM 10.30 am – 12 noon
IN THE CHURCH HALL**

DO COME AND JOIN US

Coffee Morning Christmas Specials

3 December

tea or coffee with mince pies

17 December

You are invited to the Christmas Party
10.30. - 13.00.

Coffee - Comestibles - Crackers

Sherry and mince pies

Sing along to some Favourite Carols

Grand Raffle and Auction

(Donations for prizes appreciated)

Do come along and join in the festivities

Venue - Church Hall

Please note - There will be NO Coffee
Morning on Wednesday 24 December,
but "back to business" on Wednesday 31
December.

WHO DOES WHAT DURING THE INTERREGNUM?

During a vacancy, the PCC needs to have appointed a "Management Team" to run the day-to-day matters, which would have been dealt with by the Vicar. This includes ensuring the myriad of small jobs that need doing are done and preferably by delegating a number of them to people outside the team. The PCC will consider the question in early December but, clearly, the Team will need to 'own' a lot especially ensuring the Eucharistic services are staffed by a priest and the other services by a priest or a Reader. Luckily, due to good planning, much of this aspect is already complete.

The PCC remains as the legal body responsible for everything to do with the parish and they will continue to meet as normal with the Vice Chairman in the chair. The same applies to the Standing Committee. The various other Committees will continue to operate as before. However, as has been said in a previous article, the Churchwardens and the Rural Dean act as Sequestrators to ensure the various financial disbursements are made correctly (without treading on the toes of the Treasurers!!).

Both Churchwardens and their wives have demanding full-time jobs and cannot do everything. Please don't ask us to but ask yourself "What can I do to help?" – and then offer. It will be much appreciated.

This is a time when we will need to pull together to keep everything ticking over until our new Vicar arrives. We are restricted in certain ways (e.g. we need to keep to the same pattern of services as far as is practically possible; we cannot change overall policy on anything, etc.) but this should not stop us sharing our faith.

Effective and timely communication is going to be key to our success and we urge everyone (but especially Committee Chairmen and Secretaries) to ensure that, if you have arranged something that you tell both the Parish Office and the Webmaster. Please always remember to do so. We can only work successfully if we have all the information we need and, much of the time, we are in the hands of others to provide it.

We look forward to working with you all in being able to hand over a viable church that has its eyes firmly set on the future and the opportunities we have to grow.

DRC / JDCG

AND A SPECIAL PRAYER

GOD OUR FATHER

You have welcomed each one of us in Jesus
and called us to be His Body in this place;

Send us your Holy Spirit,
at this time of uncertainty and change,
to fill us with vision, energy,
and faithfulness in prayer,
that we may be true to our calling
to bring new life to our community;

And guide with your heavenly wisdom
those who are to choose a new Incumbent for this
parish,

that the one whom we receive
may be a wise and gentle shepherd of your people:
ready to serve us with joy,
to build us up in faith,
and to lead us by example
in loving obedience to your son,
our Saviour, Jesus Christ.

Saturday, 3rd January 2009

GALA DINNER

**A celebration to mark
our Vicar's retirement**

**Please note that the closing
date for ticket sales is
December 20th**

**Application forms available
in church or from the office**

CHRISTMAS AT ST MARY'S

21 December: The Fourth Sunday in Advent

0930 Sung Eucharist followed by coffee in church, and after a brief Mattins there is the General Decoration of the church for Christmas

1700 A FESTIVAL OF NINE LESSONS AND CAROLS

Wednesday 24 December: Christmas Eve

1600 THE ARRIVAL AT BETHLEHEM SERVICE

with the Blessing of the Crib.

All-age service of Christian Family

Praise on Christmas Eve

2315 Gallery Carols by the Parish Choir before Midnight Mass

Thursday 25 December: Christmas Day

2345 (24th) MIDNIGHT MASS OF THE NATIVITY.

Full Choral service with carols.

0800 Holy Communion (Mass of the Dawn)

1000 SANG EUCHARIST OF CHRISTMAS DAY

(Mass at the Crib). *Choral service with carols.*

1200 Holy Communion



FROM THE PARISH RECORDS

HOLY BAPTISM

We receive this child into the congregation of Christ's flock

2 November Daniel George Macleod Gaunt
Jack Paul Halliday-Taylor

HOLY MATRIMONY

A holy estate, instituted of God himself

18 October Ian William Millar and Ana-Maria Lucia Fawdry

FUNERALS

In sure and certain hope (BCP Burial rite)

29 October Janice Blanche Rosemary Walker, aged 62
30 October Arthur George Chapman, aged 92
7 November Charles Alfred Moorhouse, aged 82

2009 RECITAL SERIES

- March 28 Stainer's "Crucifixion" - St Mary's choir
- May 2 Organ Recital by Jonathan Holmes (Director of Music, Ewell Parish Church) – "Popular organ classics"
- May 30 Organ recital - Jeremy Cole (Organ Scholar, St Mary's, Ewell and Organ Scholar Elect of both Hereford Cathedral and Trinity College, Cambridge)
- June 13 Organ Recital by visiting 'celebrity'
- June 27 Organ Recital by Simon Gregory (Emanuel School, Clapham)
- July 11 Emanuel Chamber Choir and instrumentalists
- Sept 12 Patronal Festival Organ Recital - Jonathan Holmes (Director of Music, Ewell Parish Church)
- Oct 10 "Jonah Man Jazz" - St Mary's Choir with local schools (7pm start)
- Nov 14 Handel's "Messiah" - St Mary's Choir

All events start at 7.30 pm unless stated otherwise

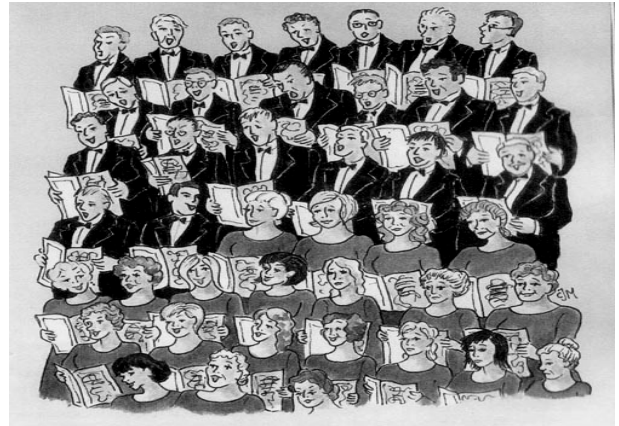
Further details from the church website

(www.stmarysewell.com/music_events.html)

or the Parish Office (020 8393 2643)



THE ALTO'S LAMENT



'It's tough to be an alto when you're singing in the choir

The sopranos get the twiddly bits that people all admire,

The basses boom like loud trombones, the tenors shout with glee,

But the alto part is on two notes (or, if-you're lucky, three).

And-when we sing an anthem and we lift our hearts in praises

The men get all the juicy bits and telling little phrases.

Of course the trebles sing the tune — they always come off best;

The altos only get three notes and twenty-two bars' rest.

We practise very hard each week from hymn-book and the Psalter,

But when the conductor looks at us our voices start to falter;

'Too high! Too low! Too fast — you held that note too long!'

It doesn't matter what we do — it's certain to be wrong!

Oh! shed a tear for altos, they're the Martyrs and they know,

In the ranks of choral singers they're considered very low.

They are so very 'umble that a lot of folk forget them;

How they'd love to be sopranos, but their vocal cords won't let 'em!

And-when the final trumpet sounds and we are wafted higher,

Sopranos, basses, tenors -- they'll be in the Heavenly Choir

While they sing 'Alleluia' to, celestial flats and sharps,

The altos will- be occupied with polishing the harps.

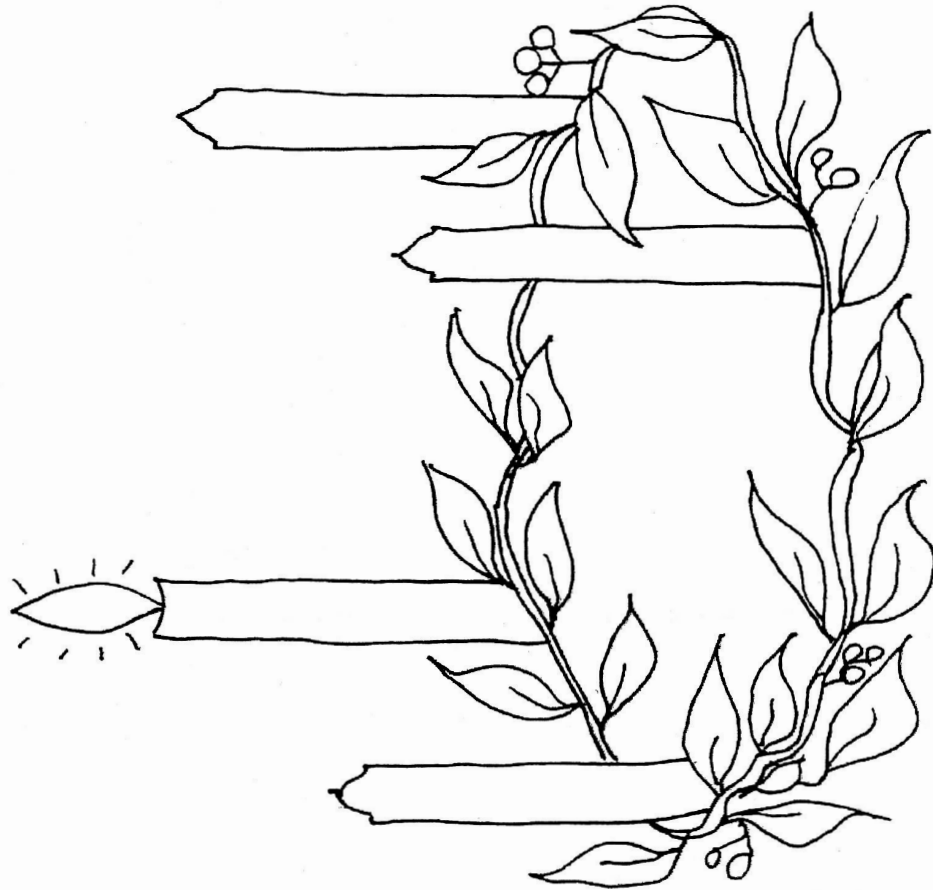
ANON

Page 9 can be cut out if needed

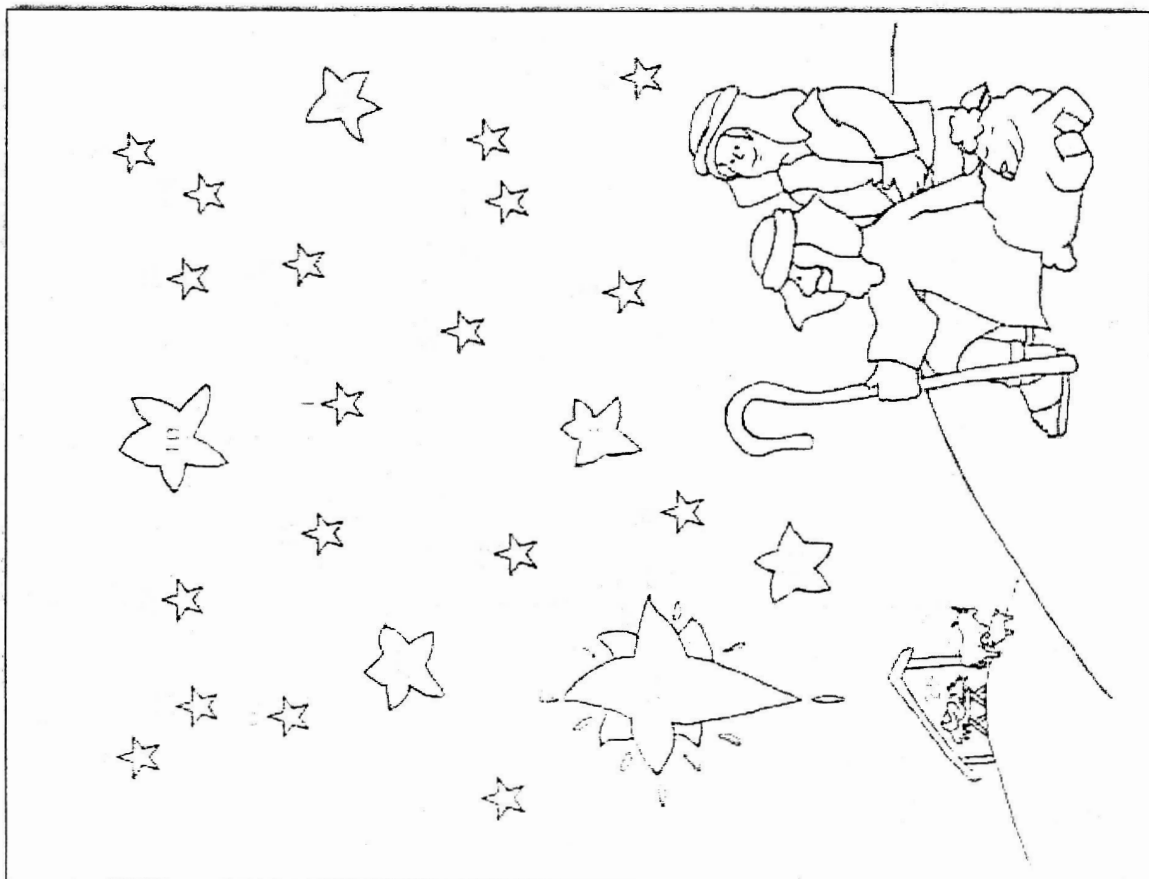
Young Church Mag

30 November 2008, First Sunday of Advent: Mark 13: 24 to 37

Today is the first Sunday in Advent, so we light the first Advent candle



Colour one star on this Advent Calendar every day until December



KINGSWOOD SERVICES

SPRING CLEANING

Thinking of Spring Cleaning Your Home but You are too busy / dislike cleaning

We can help - All Year Round - with

- Regular Cleans
- Thorough One-off Home Cleans
- Carpet Cleaning

undertaken by experienced people you can trust

Superior Work at Sensible Prices

Domestic Cleaning and Commercial Contracts undertaken

HOUSE LETS

Kingswood Services can also advise you on

- House Letting arrangements
- Inventory Cleans
- Property Makeovers

To arrange a free no-obligation estimate or to request further details, please phone:

020 8669 7298 (office)

St Mary's Toddler Groups

Sessions are held on:

Monday afternoon,
Thursday and Friday
mornings during term time
in the church hall.

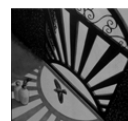
For more information:

Tel. 020 8393 4804



The Rising Sun Epsom

14 Heathcote Road, Epsom KT18 5DX



A warm welcome awaits you. Award winning real ales and wine. A la carte Restaurant. Large landscaped garden with heated covered patio. Bar-B-Q. Function room.

Delicious dining in our restaurant or al fresco. Daily **specials** board. All food cooked on the premises by our chefs and locally sourced where possible.

Large selection of **wines** by the bottle or glass. **Youngs** ales, many guest beers, lagers, ciders and soft drinks.

Having a do? Functions and parties are our speciality.

Come and see us about using our function room. We can tailor a menu to suit your taste and budget.

Wedding receptions, birthdays, work do's, meetings, club nights, parties, all functions catered for.

Enquiries call
01372 740809

Visit our website have a look see the menus
www.therisingsunepsom.com
Email mail@therisingsunepsom.com

ALFRED & EWART LONGHURST

FUNERAL DIRECTORS AND MONUMENTAL MASONS

- A complete, caring professional service
- Estimates and advice freely given for funerals and memorials
- Flexible pre-paid funeral plan - details on request

21-23, KINGSTON ROAD, EWELL

020 8393 1077

Calendar for December



- T 2 1430 Meeting of the External Affairs Committee
(This will mainly be concerned with choosing a Lent Project for 2009.)
- W 3 2000 Meeting of the Parochial Church Council
- S 7 **SECOND SUNDAY IN ADVENT**
The Vicar preaches at the Cathedral at 0945
- M 8 2000 Meeting of the Finance Committee
- T 9 1200 Deanery Chapter at St Mary's Cuddington
- W 10 1900 'Surrey Life' Carol Service in aid of CHASE hospice care. Admission by ticket, available through 'Surrey Life', not St Mary's.
- Th 11 1400 Ewell Grove School Carol Service
- F 12 1100 Ewell Castle Junior School Carols for Years 1 and 2
- S 14 **THIRD SUNDAY IN ADVENT**
Book of Common Prayer Sung Eucharist at 1100
- M 15 1800 Ewell Castle Junior School Carol Service
- W 17 1030 The Coffee Morning Christmas Party
1100 Ewell Castle Senior School Carol Service
- S 21 **FOURTH SUNDAY IN ADVENT**
Unusual morning timetable; see page 7
1700 A Festival of Nine Lessons and Carols
See page 2

For Christmas Services, see page 7

- S 28 **THE SUNDAY AFTER CHRISTMAS**
HOLY INNOCENTS DAY
The usual arrangements for simpler services than usual on this day. The choir is on holiday. The 0800 service will be of the Sunday, and the 0930 of the festival of the Holy Innocents. Mattins will be 'said with carols', and there will not be an evening service.

HOST A STRANGER FOR CHRISTMAS

Visits from strangers at Christmas began with shepherds turning up at a Bethlehem stable, and continued with the arrival of wise men from a foreign land. You could carry on this tradition, by inviting an international student to spend Christmas in your home. HOST is a well-established charity, backed by the Foreign Office and many universities, which links adults studying in the UK with hospitable volunteers throughout Britain. Guests come from all over the world, including many from China. They speak English, are keen to share their own culture, while longing to know more about our way of life. Welcoming a student who might otherwise spend Christmas on a deserted campus, fosters international understanding, and will make Christmas special. See www.hostuk.org or call 0207 254 3039, for more information. HOST arranges visits throughout the year, so if your 'inn' is full this Christmas, you can still offer an invitation at another time.

SWALLOW HOMECARE SERVICES

HOMEBASED CARE FOR THOSE WHO WISH TO REMAIN IN THEIR OWN HOMES

We have highly trained carers who provide a high standard of care.

Our services include:-
Personal care, laundry, light Domestic, Meal Preparation, Shopping and companionship.

For further information call us now on:-
0208 823 9240.

Easy Buy Appliances

Now Open in Ewell Village (Near Free Car Park)

Washing Machines, Dishwashers, Tumble Dryers
Fridges & Freezers, Gas & Electric Cookers
Vacuum Cleaners, Built in Appliances
All Types of small appliances

Open 9am - 5.30 (Mon-Fri) Quality products at low prices
9am - 5.00 (Sat) Free local delivery

5 Cheam Road, Ewell Village, Surrey KT17 1SP
020 8224 0916

PRIORY COURT,

OLD SCHOOLS LANE, EWELL VILLAGE, SURREY



Priory Court Care Home is situated in the heart of Ewell Village. This modern home offers both nursing and residential care, long or short term stays.

We have 60 en-suite single rooms, some offering direct access onto our peaceful garden.

Our motivated care staff will respect your independence, while helping you with the daily routines that you find a struggle. We provide in-house activities, outings and regular Church services. Visitors are welcome at any time.

If you would like further information, please contact:
Sue Crayden, Mary Ross or Susan Dowley.
Telephone 020 8393 0137 Fax 020 8394 1905
Email: manager@priorycourtcare.plus.com
Website: www.stcloudcare.co.uk

**WELCOMING YOU TO A
CARING FUTURE**

**BRADLEY &
ARTHUR Ltd**

BRADLEY & ARTHUR LTD.
Established 1923



Serving Epsom, Ewell and district for over 80 years

- Builders, Contractors and Decorators •
- Domestic and Commercial •

Contact us now for a no obligation quotation

53 High Street, Ewell KT17 1RZ

Phone: **020 8393 5122** Fax: **020 8394 2008**

Email: **bradleyandarthur@aol.com**